

GIOTTO BT B ULTRA 36

What to know

THE GIOTTO ULTRA 36 HAS BEEN EQUIPPED WITH NEW FUNCTIONS TO IMPROVE THE CUSTOMER EXPERIENCE AND MAKE IT EVEN MORE COMPLETE AND VERSATILE.

Giotto Ultra 36 has been enriched with new options to meet market requirements and become the reference barrier in the Bft range for intensive/very intensive use.

It is ideal for use in car parks, industrial areas and for access management at roadside entrances.



Bft

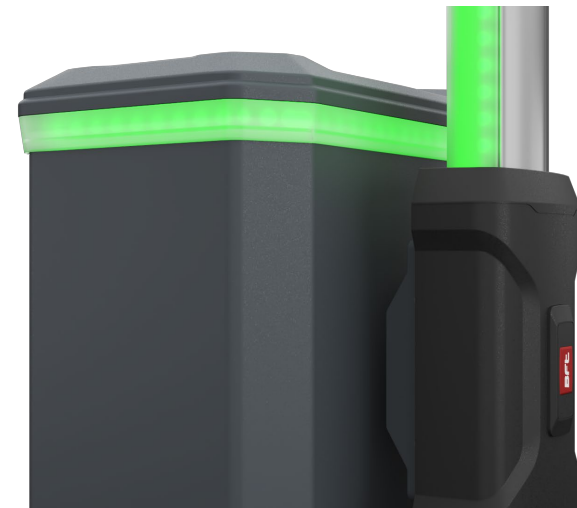
The light ring

What to know



The Giotto Ultra 36 is now also available in a version with a light ring, that can be integrated into the cap.

The light ring contains high-intensity red/green LED lights with traffic light function, in a translucent plastic diffuser.

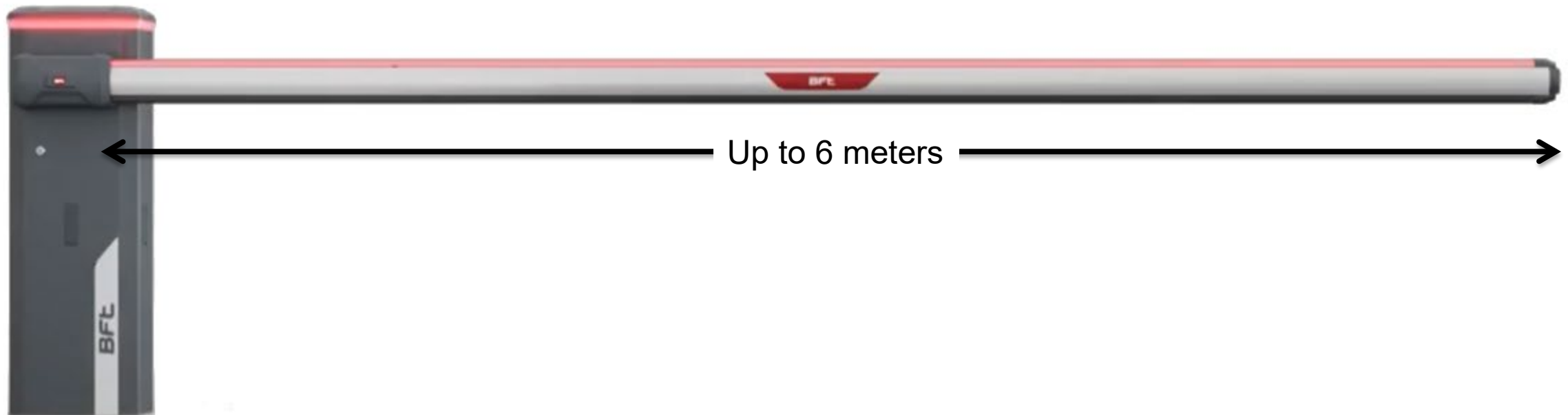


Lights and rubber up to 6m

What to know

NEW

Installation of the lights and protective rubbers along the entire length of the ES and PS booms, up to six meters, to provide a complete kit for industrial applications.



The main features

What to know

- **OPENING TIME:** from 2,2 up to 4 sec depending on the boom length
- **FREQUENCY OF USE:** 5.000 CYCLES/DAY (@3m) – 2.000 CYCLES/DAY (@6m) from intensive to very intensive
- **FREE PASSAGE:** from 2 up to 6 meters
- **MOTOR TYPE:** 24V
- **BOOM TYPE:** compatible with ES and PS boom
- **IMPACT REACTION:** by encoder
- **PROTECTION GRADE:** IP54
- **WORKING TEMPERATURE:** from -20 up to + 55°C



Sum-up

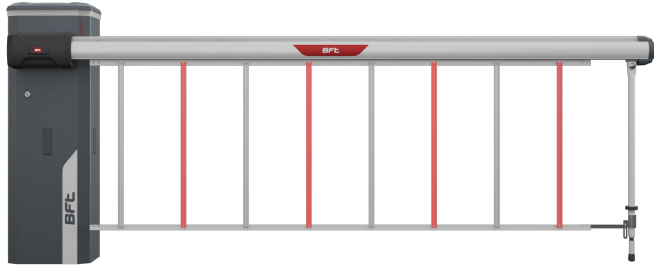
What to know



Product plus

What to say

Some of the key accessories:



- Skirt to prevent access by pedestrians or unauthorised vehicles, compatible with ES and PS bars up to 5 meters in length.
- Articulated PS boom for mounting in restricted height environments (e.g. underground car parks). **Tested to one million cycles on 5 meters bar.** Available in articulated kit and assembled 3 and 5 meters versions.
- Back-up battery (optional) to ensure barrier continues to operate even during a power cut.

