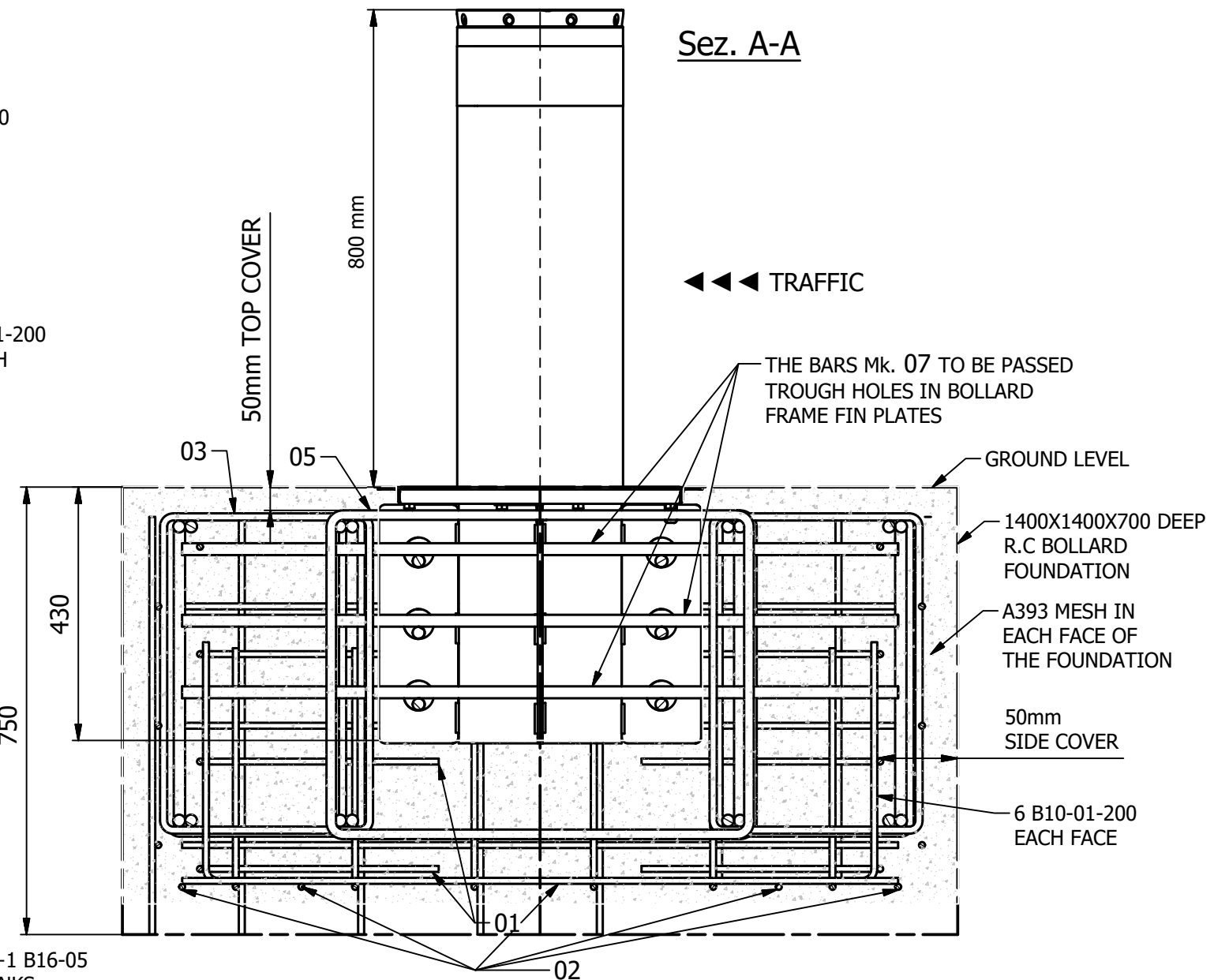
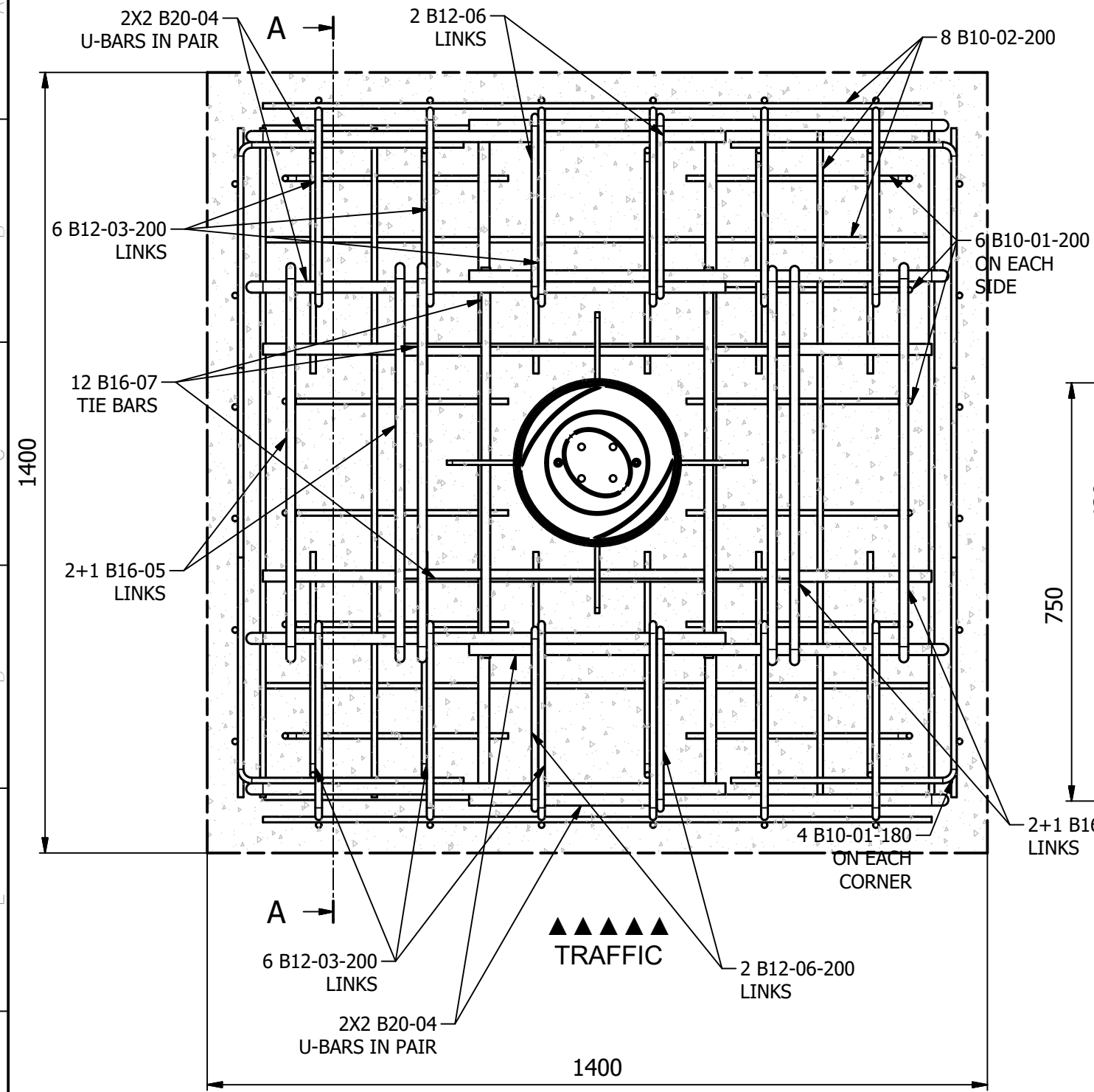


OAK800.4-F/RANCH D Scale 1:10



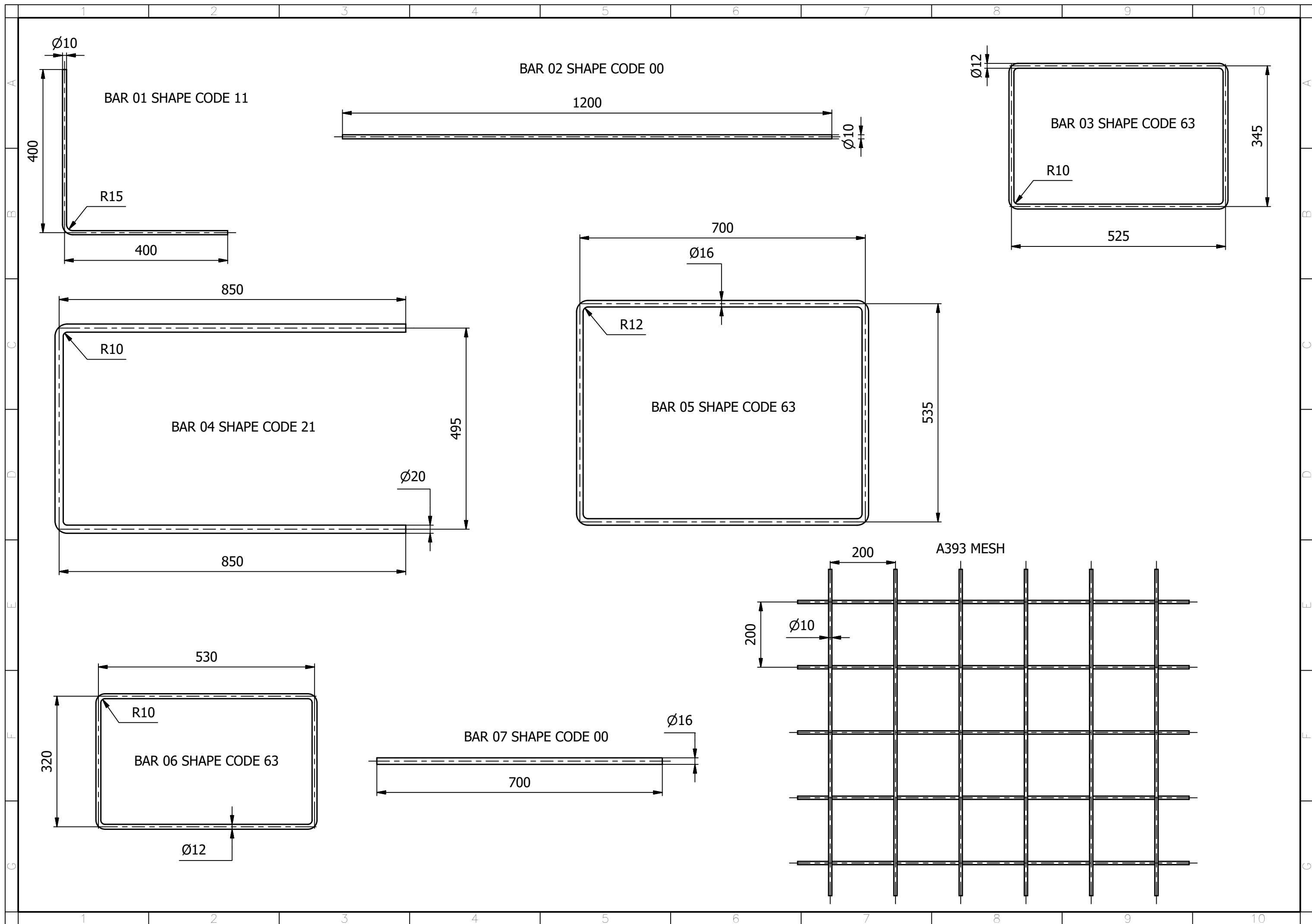
- NOTES:
1. Do not scale drawing. Use figured dimensions and levels only. All sizes are in millimeters.
  2. The contractor is to verify dimensions and levels on the site prior to starting work. Any discrepancies to be reported to the engineer for clarification before proceeding with the construction.
  3. All specified materials shall be used in accordance with the manufacturers recommendations.
  4. Nomination of proprietary items does not indicate exclusive preference but the required properties and performance of the item. Similar alternatives having the equivalent properties may be used.

FOUNDATION CAGE BOM

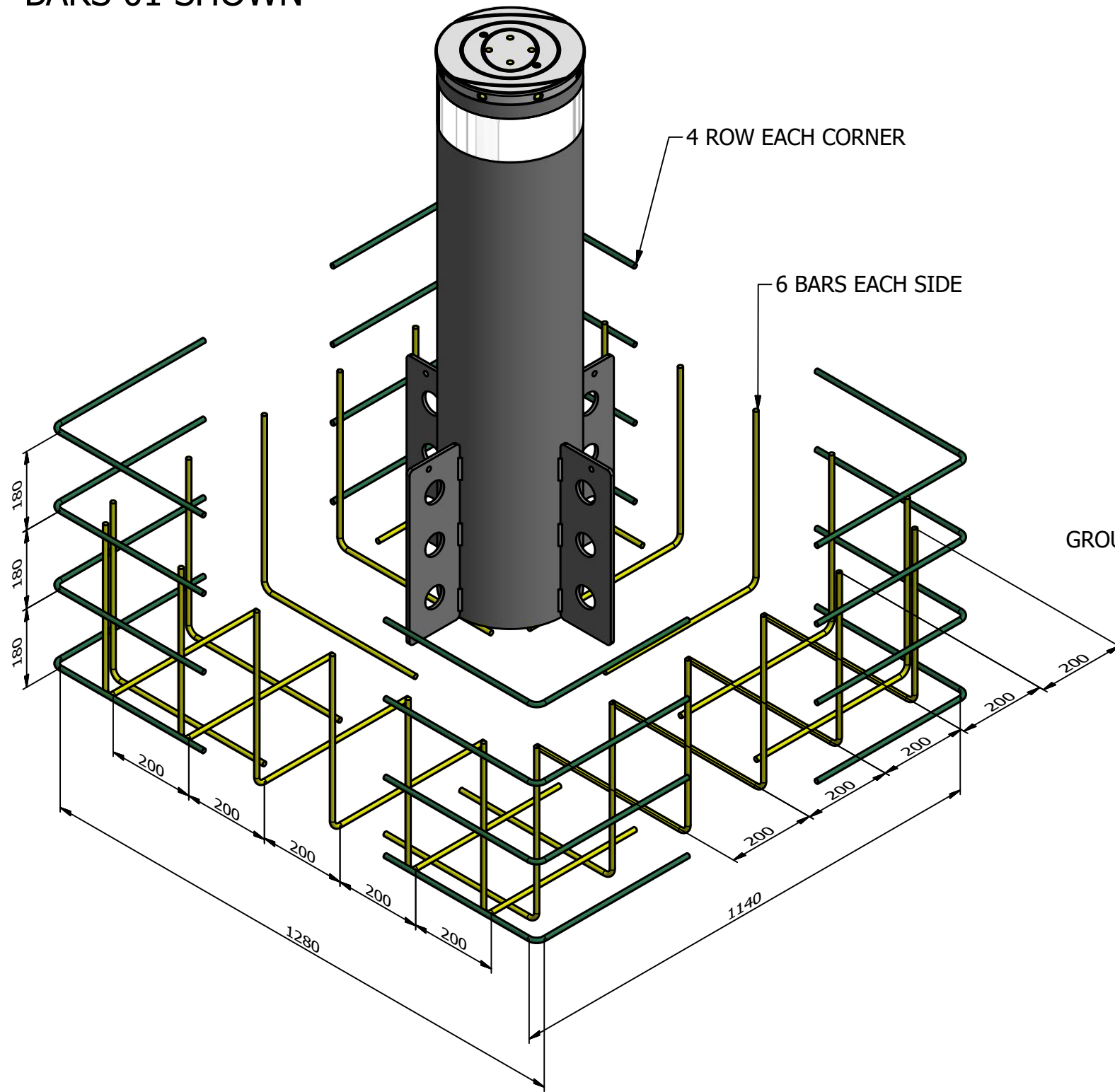
Member	Bar Mark	Type and Size	No. of Members	No. of bars in each	Total No.	Length	Shape code	A*	B*	C*	Rev. letter
Foundation	01	B10	1	40	40	800	11	400	400		
	02	B10	1	8	8	1200	00	1200			
	03	B12	1	12	12	1740	63	525	345		
	04	B20	1	8	8	2200	21	850	495	850	
	05	B16	1	6	6	2470	63	535	700		
	06	B12	1	4	4	1700	63	320	530		
	07	B16	1	12	12	700	00	700			

- CONCRETE:
- \* All concrete to be in accordance with BS8500, Mixes to be: BLINDING AND SOFT SPOTS - GEN 1 REINFORCED CONCRETE - RC32/40, DC-3
  - \* All material and workmanship to be in accordance with recommendations of BS EN 1992 EUROCODE 2.
  - \* Minimum lap: Bar reinforcement: C20 $\phi$  = 1000mm
  - \* Reinforcement is listed on bar bending schedule on drawing.
  - \* Foundation reinforcement cage to be wired tied not welded to enable reinforcement to be adjusted on site if required.
- \* Minimum cover to reinforcement cast against:  
 Formwork or top surface - 50mm  
 Blinding - 50mm  
 Earth face - 75mm (increase size of foundation)  
 Bollard structure - 25mm
- \* Cover to be maintained by the use of propriety cover spacers. Broken paving slabs, bricks etc. are not permitted.  
 \* Top surface to be steel float finished.

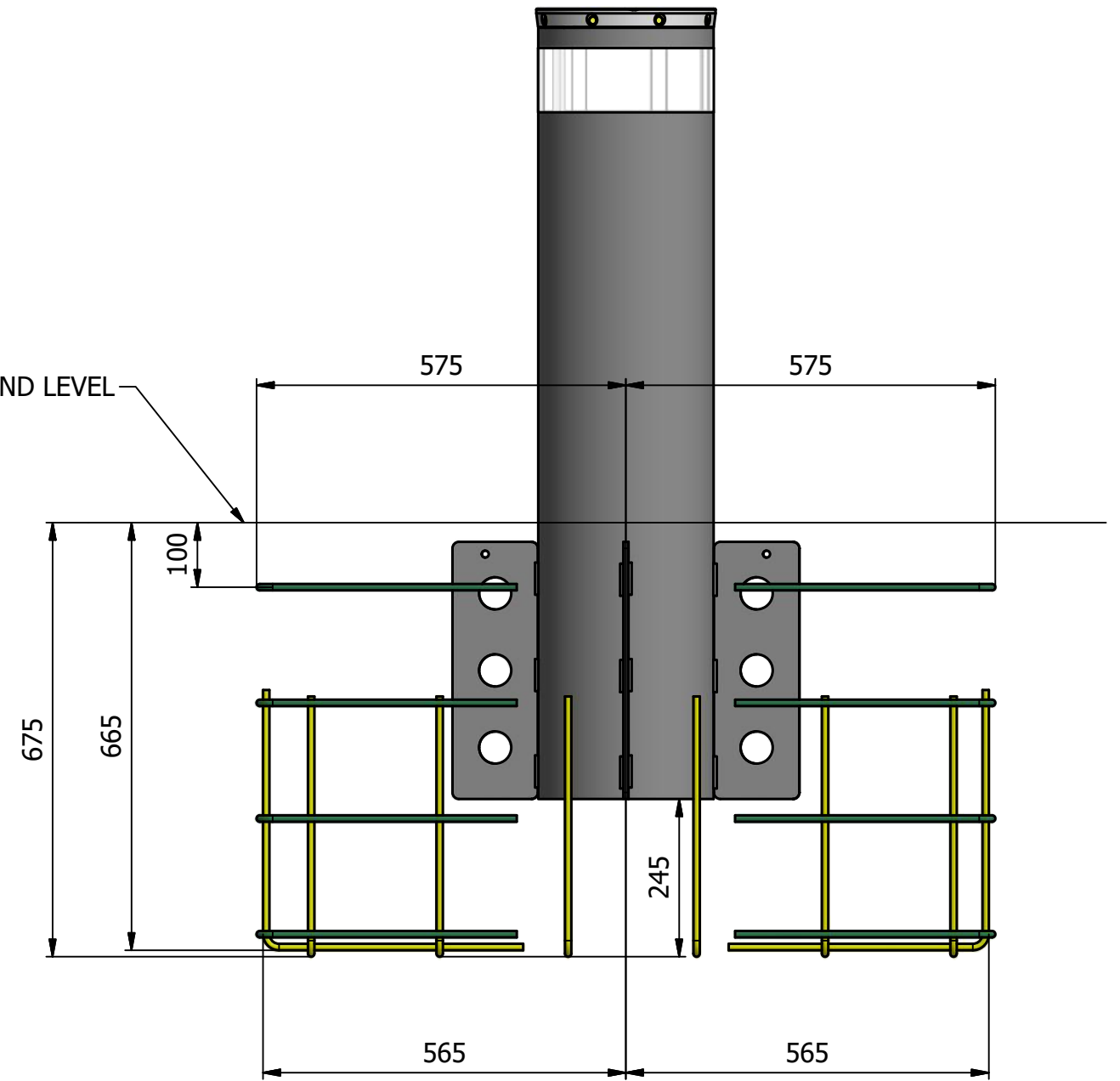
cod. 035987 rev 001



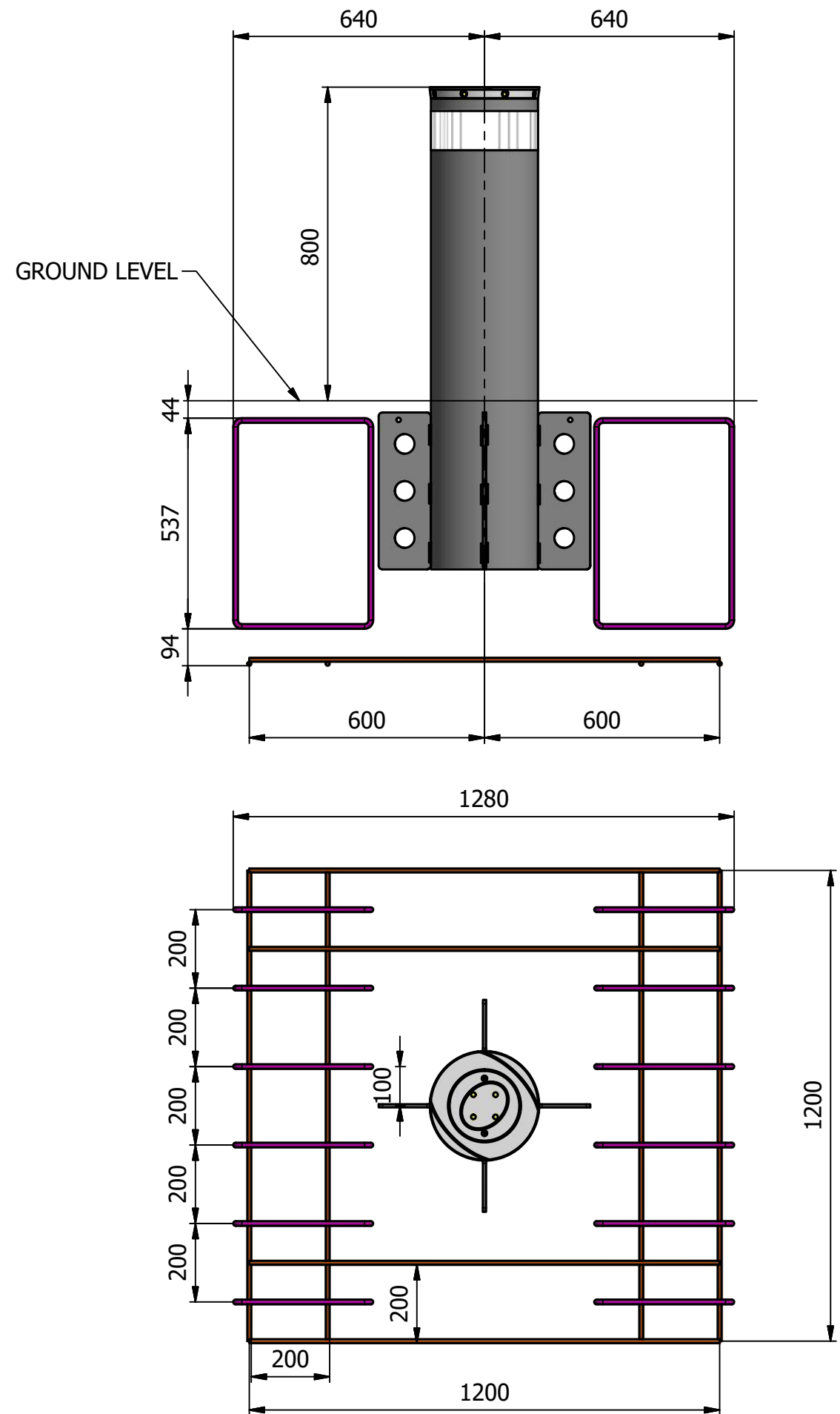
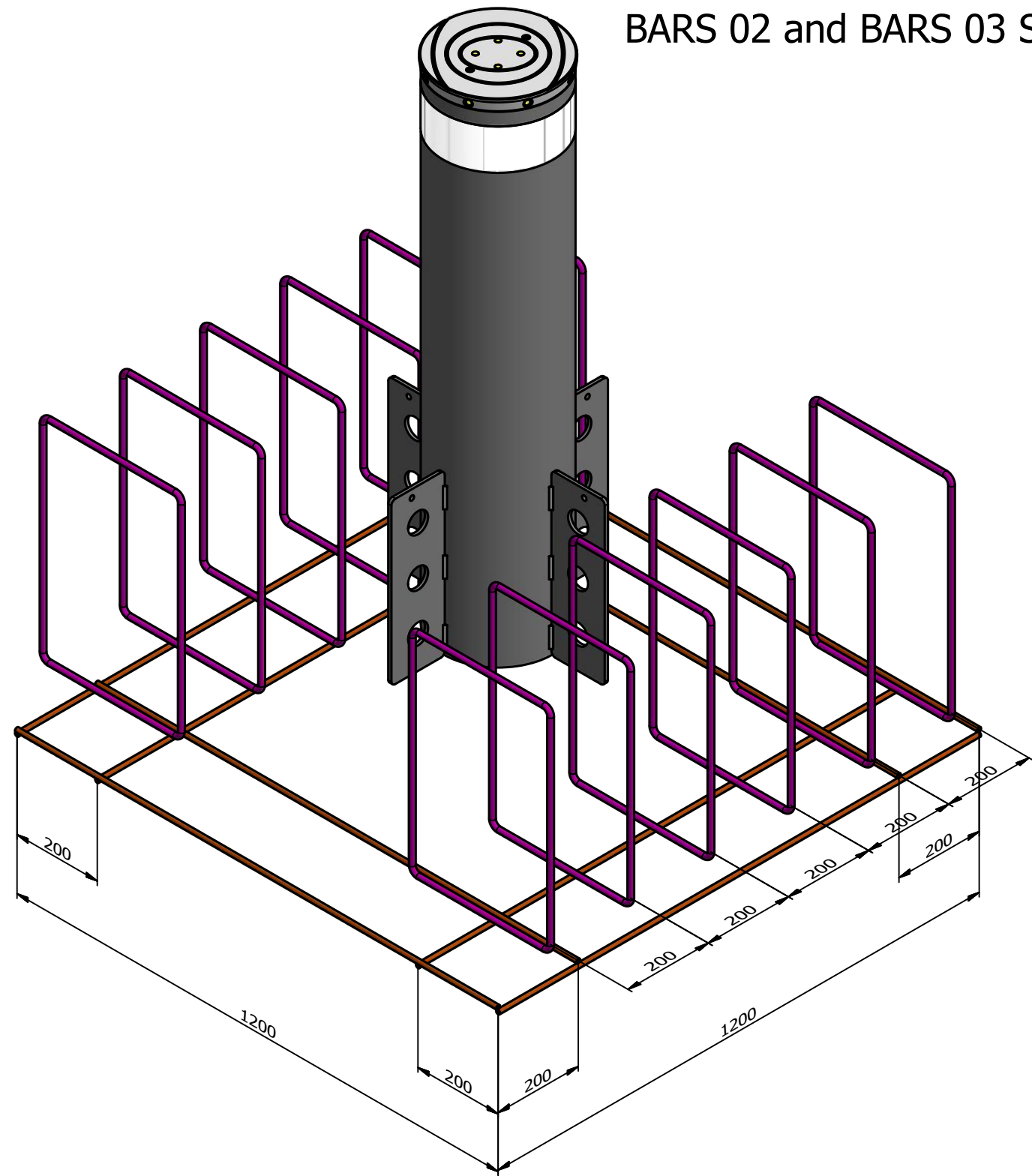
BARS 01 SHOWN



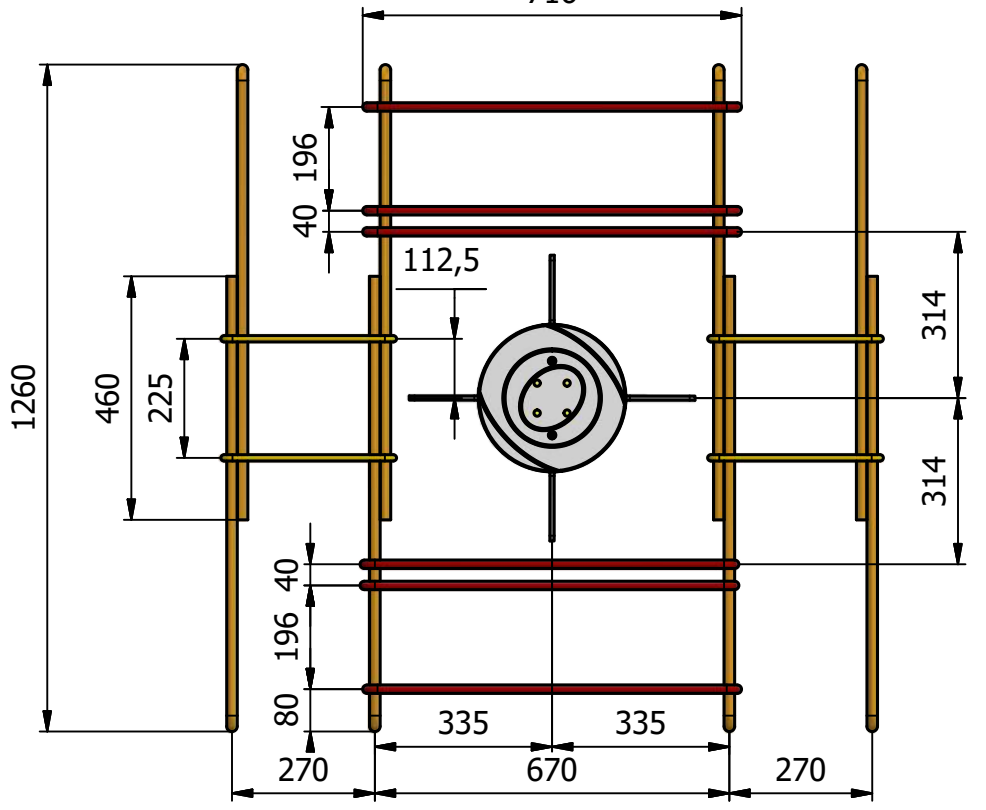
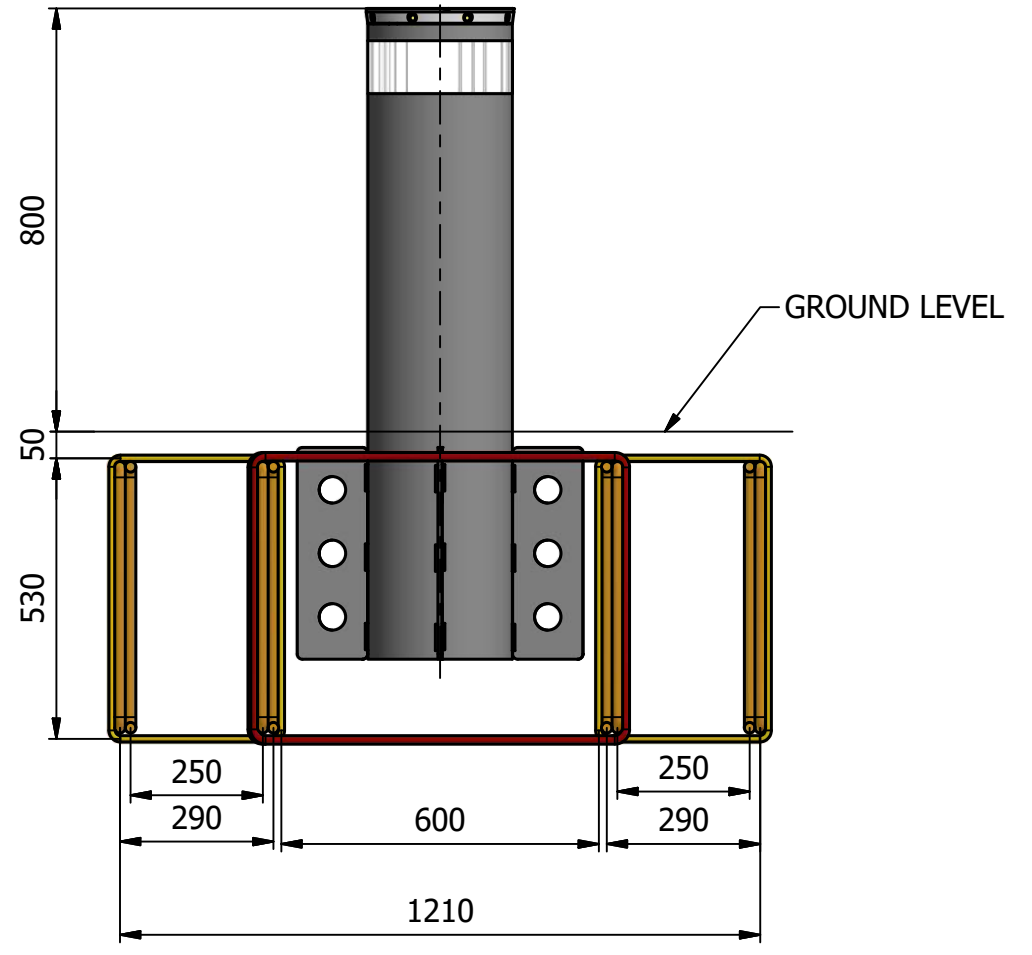
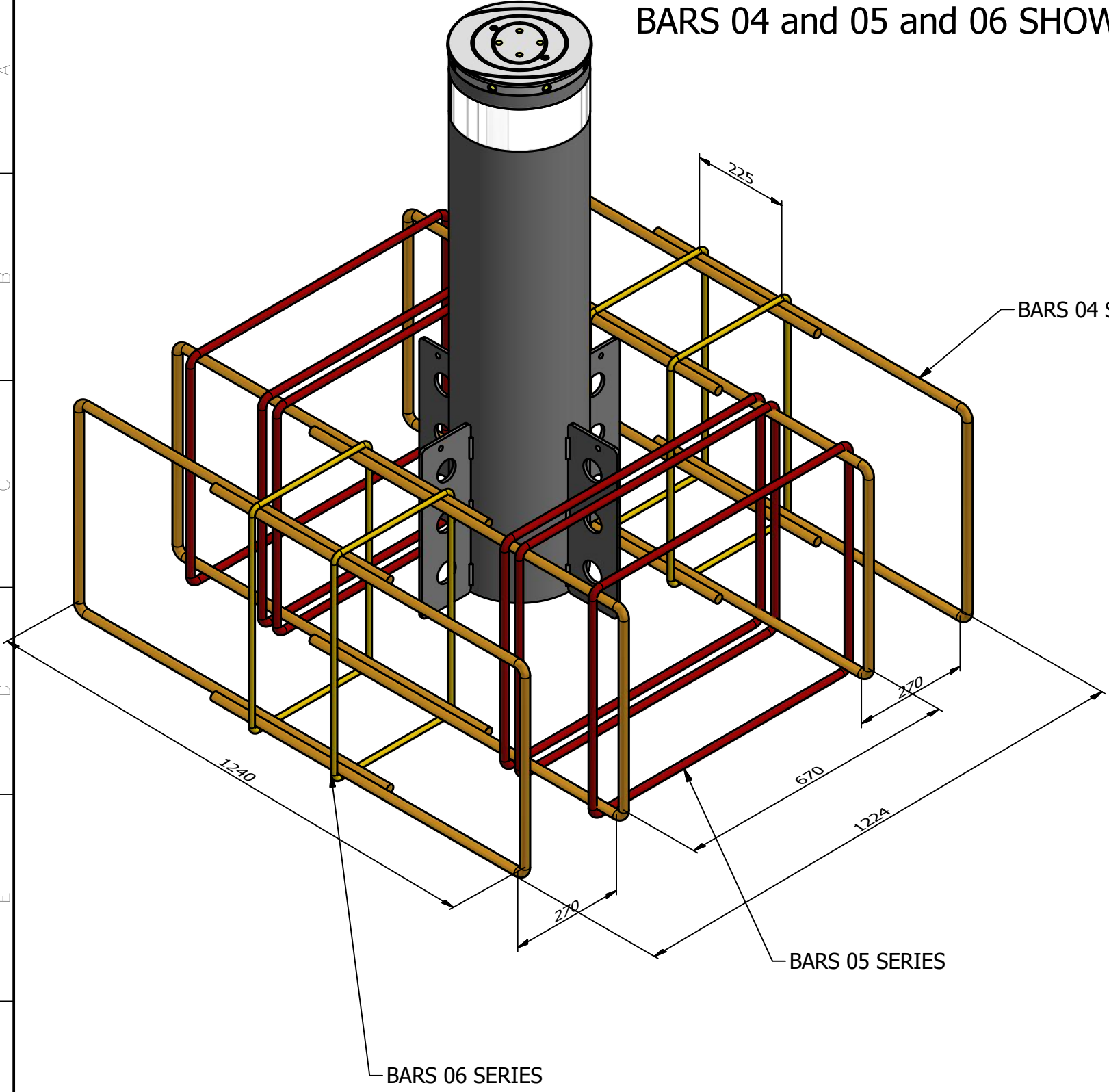
GROUND LEVEL



BARS 02 and BARS 03 SHOWN



BARS 04 and 05 and 06 SHOWN



A393 MESH and BARS 07 SHOWN

