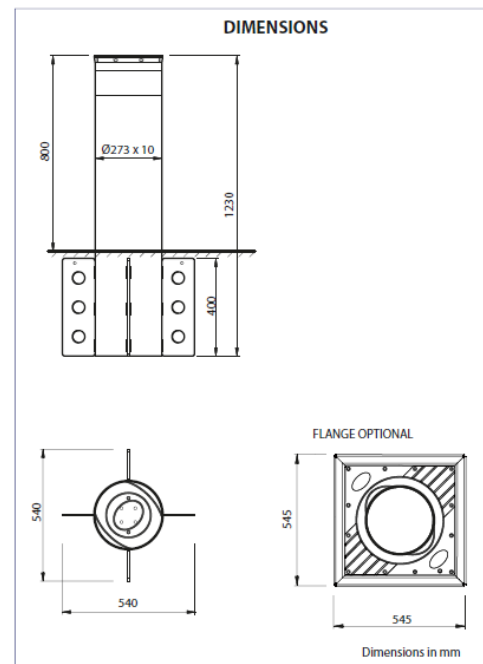
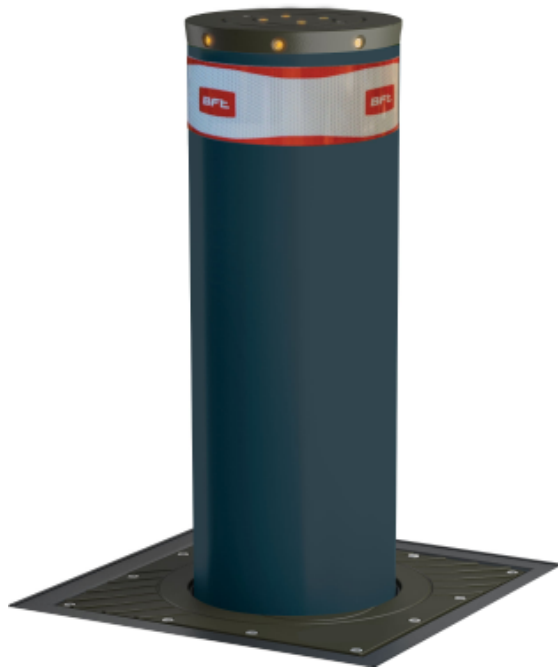


Model **RANCH D**

EQUIVALENT RESISTANCE CALCULATION

Based on the actual crash test done by CTS, a double automatic bollard installation stopped a 7500 kg a truck moving at 48 km/h



and equivalence calculations, the RANCH D fixed bollard will stop the same truck according to **IWA 14-1:2013 specification**, in

TWIN INSTALLATION
according to IWA 14-2:2013

Signed:

Stefano Valzania
Managing Director, O&O Srl



tuned to you